



EXPEDITION SERIES WOOD INSERTS

QUADRA-FIRE
BY FORGE & FLAME

PERFORMANCE FROM THE BEGINNING



In 1990, the U.S. Environmental Protection Agency (EPA) enacted stringent wood-burning regulations, crippling the more than 500 wood stove manufacturers around the country. But not Quadra-Fire®.

Two years of research and development later, founders Alan Trusler and Dan Henry unveiled their patented “Quad Burn” system. The technology produced powerful and efficient rolling flames so intense, it dawned the inception of the Quadra-Fire name.

In 2015 and 2020, the U.S. Environmental Protection Agency updated their regulations requiring even tougher standards on emissions. Using our existing technology, Quadra-Fire was able to exceed these new standards ensuring renewable heat sources for generations to come.

WHY WOOD

IT'S RENEWABLE - Using renewable energy sources is more important than ever and wood is 100 percent renewable. When you burn wood, you are also completing the last step of the natural carbon cycle of trees, resulting in a zero net carbon impact on the environment.

IT'S COST-EFFECTIVE - Heating with wood costs less than heating with electricity, liquid propane or heating oil, especially if you harvest wood yourself.

WHY AN INSERT

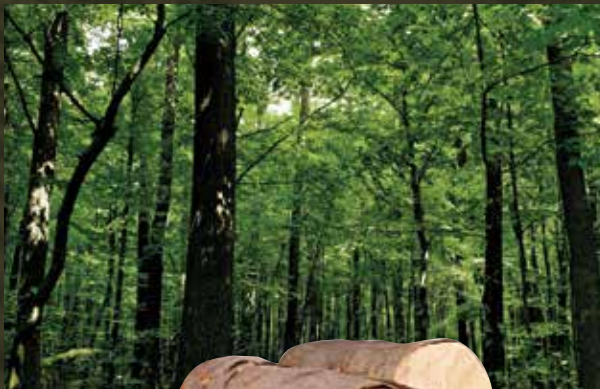
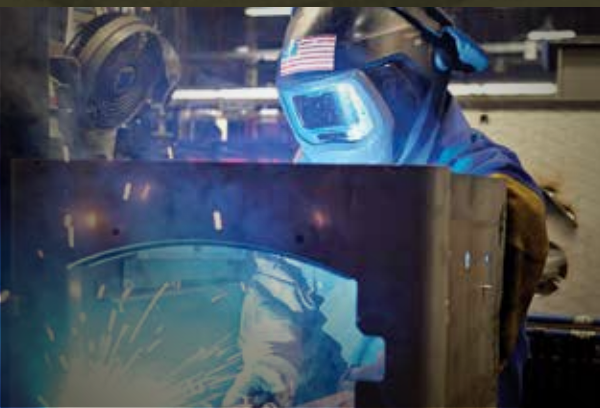
To transform your existing traditional wood fireplace into a beautiful and efficient heat source.

WHY A QUADRA-FIRE WOOD INSERT

At Quadra-Fire we believe that nothing burns like a Quad and heating with wood should be easy and cost effective. Today these ideals are vibrant and alive, blending our past with our present. Quadra-Fire products are proudly built to last by our members.

As the fire ignites, it remains clear:

NOTHING BURNS LIKE A QUAD.



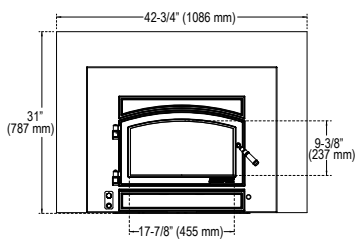
SHOWN ON COVER: EXPEDITION II IN CLASSIC BLACK SHOWN WITH MEDIUM STEEL SURROUND WITH NICKEL TRIM

EXPEDITION I

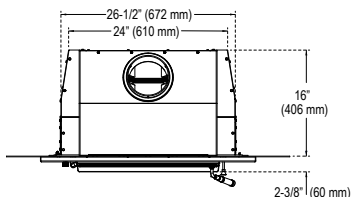


EXPEDITION I INSERT SHOWN WITH MEDIUM SURROUND AND CAST IRON TRIM

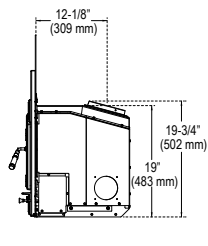
Peak BTU/hr Output ¹ 37,400	Heating Capacity ² 650 - 1,300 sq ft	Max. Burn Time ³ up to 6 hrs	Efficiency ⁴ LHV: 70% HHV: 65%	Emissions 1.9 g/hr	Firebox 1.5 cu ft	Recommended Log Length 18"	Blower System 200 cfm	Weight 335 lb
---	--	---	---	------------------------------	-----------------------------	---	---------------------------------	-------------------------



TOP VIEW



FRONT VIEW



SIDE VIEW



INSERT COLOR:
CLASSIC BLACK

EXCLUSIVE TECHNOLOGIES Innovative technology is at work in every Quadra-Fire. These advancements make it possible to burn wood more effectively and efficiently.



FOUR- POINT BURN SYSTEM

The patented Four-Point Burn System produces intense rolling flames. Four combustion cycles extend the heat, enhance the fire and increase efficiency for long-lasting, proven performance.



AUTOMATIC COMBUSTION CONTROL

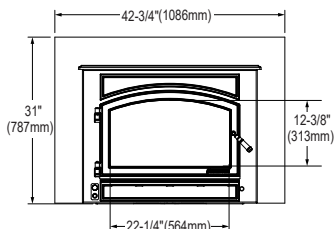
Automatic combustion control is an advanced heat management technology. ACC feeds the fire with air when its needed most – for prescient start-ups and consistent, extended burns.

EXPEDITION II

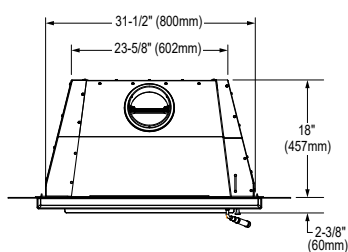


EXPEDITION II INSERT WITH CAST IRON TRIM AROUND A MEDIUM SURROUND

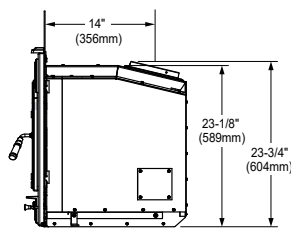
Peak BTU/hr Output ¹ 56,000	Heating Capacity ² 1,300 - 2,400 sq ft	Max. Burn Time ³ up to 7 hrs	Efficiency ⁴ LHV: 77% HHV: 71%	Emissions 1.9 g/hr	Firebox 2.4 cu ft	Recommended Log Length 20"	Blower System 200 cfm	Weight 407 lb
---	---	---	---	------------------------------	-----------------------------	---	---------------------------------	-------------------------



TOP VIEW



FRONT VIEW



SIDE VIEW



INSERT COLOR:
CLASSIC BLACK

EXCLUSIVE TECHNOLOGIES Innovative technology is at work in every Quadra-Fire. These advancements make it possible to burn wood more effectively and efficiently.



FOUR- POINT BURN SYSTEM

The patented Four-Point Burn System produces intense rolling flames. Four combustion cycles extend the heat, enhance the fire and increase efficiency for long-lasting, proven performance.



AUTOMATIC COMBUSTION CONTROL

Automatic combustion control is an advanced heat management technology. ACC feeds the fire with air when its needed most – for prescient start-ups and consistent, extended burns.

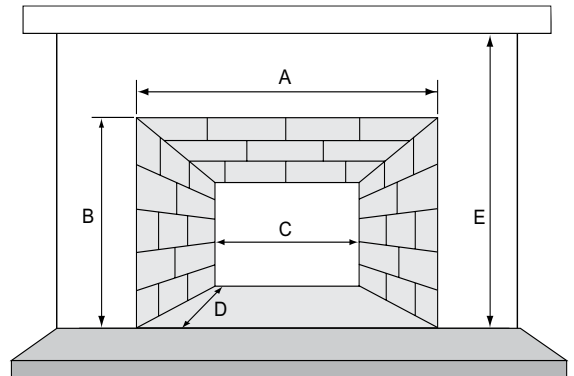
In two easy steps, Expedition Series wood fireplace inserts can transform your existing traditional wood fireplace into a beautiful and efficient heat source without a major renovation.



STEP 1: MEASURE YOUR EXISTING FIREPLACE OPENING AND SELECT YOUR INSERT

The height, width and depth of the existing fireplace opening is needed to ensure selection of an appropriately-sized insert:

- A. Fireplace front width _____
- B. Fireplace front height _____
- C. Fireplace back width _____
- D. Fireplace depth _____
- E. Hearth to mantel height _____
(Based on a 12" deep combustible mantel)

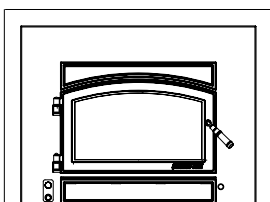


RECOMMENDED MINIMUM FIREPLACE OPENING

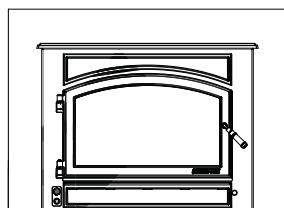
	A	B	C	D	E
Expedition II	32"	23-3/8"	23-7/8"	18-1/4"	47-3/4"
Expedition I	27"	19-1/4"	24-1/2"	16"	44-3/4"

STEP 2: SELECT YOUR SURROUND SIZE AND OPTIONS

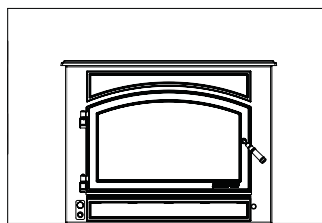
Include a surround to fill the gap between the fireplace insert and existing fireplace opening. Options include cast iron trim and nickel trim.



Small: 38" x 27-3/4"
(Expedition I only)



Medium: 42-3/4" x 31"
(for Expedition I & Expedition II)



Large: 50-3/4" x 34"
(Expedition II only)



Optional Cast Iron Trim
(for medium and large surrounds only)

Optional Nickel Trim
(for all surrounds)



EXPEDITION I INSERT SHOWN WITH MEDIUM SURROUND

Thank you from everyone at Quadra-Fire

QUADRA-FIRE[®]

BY FORGE & FLAME

www.quadrafire.com

[facebook.com/QuadraFire](https://www.facebook.com/QuadraFire)

twitter.com/QuadraFire

[youtube.com/QuadraFirePower](https://www.youtube.com/QuadraFirePower)

Available From:

Limited Lifetime Warranty⁵

The strongest in the industry, Quadra-Fire provides a limited lifetime warranty on the most important aspects: firebox and heat exchanger.

¹ A range of BTU outputs based on HHV and the burn rates from the low and high EPA tests, using cord wood. ² Heating capacity (in square feet) is a guideline only and may differ due to climate, building construction and condition, amount and quality of insulation, location of the heater, air movement in the room and type of wood used. ³ Actual burn time varies based on wood type, chimney height and moisture content of wood. ⁴ Weighted average LHV (Low Heating Value) efficiency. HHV (High Heat Value) efficiency used to qualify products for Tax Credit beginning in 2021. ⁵ For full warranty details go to www.quadrafire.com.

IMPORTANT - READ BEFORE YOU INSTALL! - Refer to the Owner/Installation Manual for complete clearance requirements and specifications. The images and descriptions in this brochure are provided to assist you in product selection only.

Quadra-Fire is a registered trademark of Hearth & Home Technologies. Product specifications and pricing subject to change without notice. Fireplace, stove and insert surfaces get extremely HOT and can cause burns if touched. Keep a safe distance away. To learn more visit www.quadrafire.com/fireplacesafety

QDF-1073U-0823